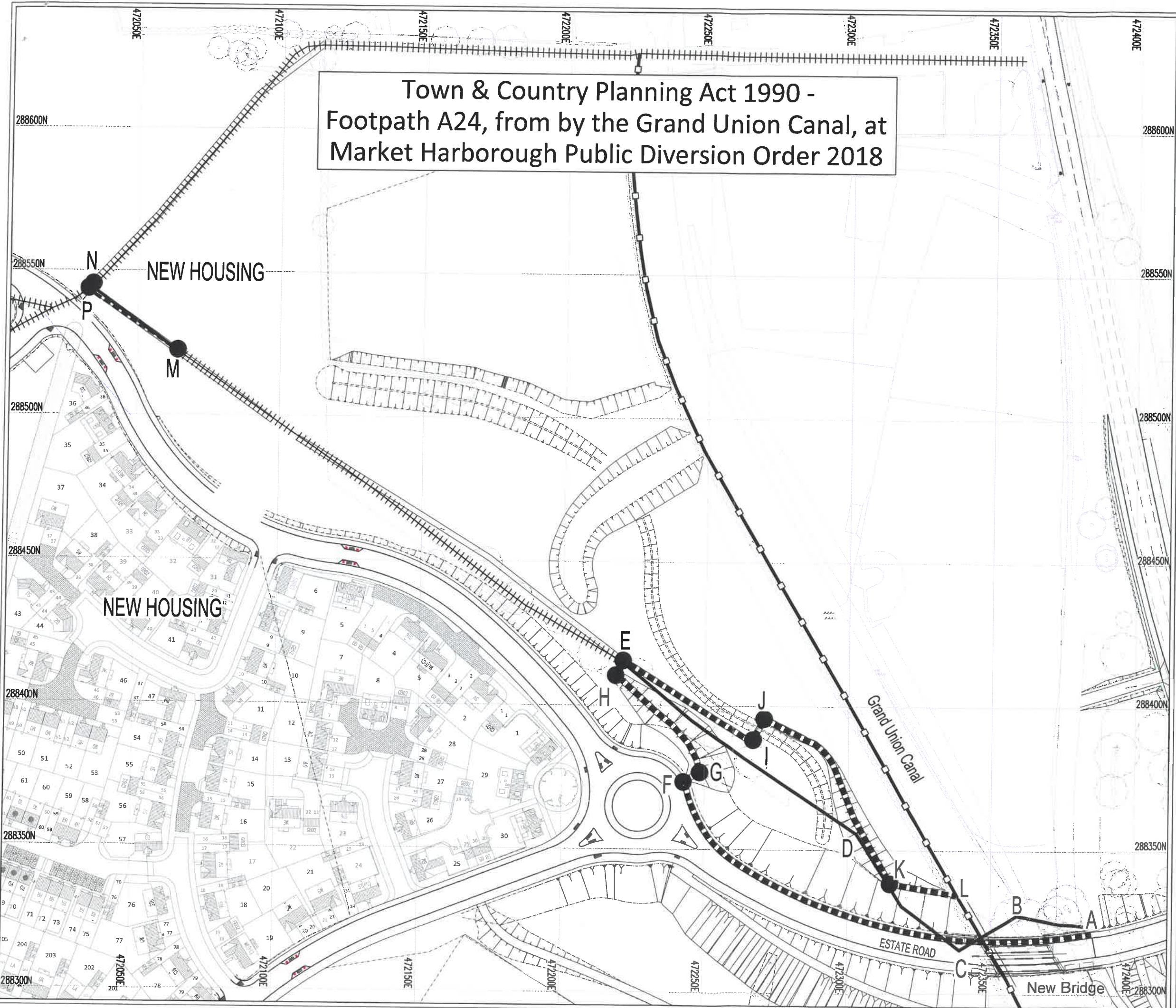
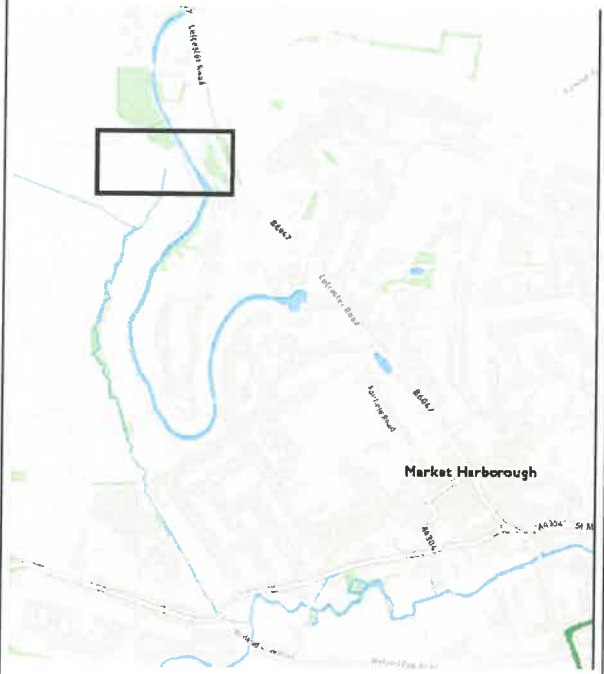


**Town & Country Planning Act 1990 -
Footpath A24, from by the Grand Union Canal, at
Market Harborough Public Diversion Order 2018**



Location Plan



- KEY**
- Footpaths to be diverted
A-B-C-D-E.
M-N.
 - Alternative new footpaths
A-F-G-H-E.
E-I-J-K-L.
M-P.
 - Footpaths unaffected
 - Canal towpath

Scale: 1:1,250



Halifax House, Halifax Place, Nottingham, NG1 1QN.
t 0115 948 2612
mail@watermangroup.com www.watermangroup.com

17132-CIV-SA-00-2454